


Administering Adobe Creative Suite 6 with the Casper Suite

Technical Paper
Casper Suite v8.4-8.7
8 January 2014



 JAMF Software, LLC
© 2014 JAMF Software, LLC. All rights reserved.

JAMF Software has made all efforts to ensure that this guide is accurate.

JAMF Software
301 4th Ave S Suite 1075
Minneapolis, MN 55415-1039
(612) 605-6625

Casper Admin, Casper Remote, the Casper Suite, Composer, JAMF Software, the JAMF Software logo, the JAMF Software Server (JSS), and Self Service are trademarks of JAMF Software, LLC, registered in the United States and other countries.

Adobe, Acrobat, Adobe AIR, Adobe Creative Suite, and Photoshop are registered trademarks of Adobe Systems Incorporated in the United States and/or other countries.

Contents

Page 4	Introduction What's in This Guide Important Concepts Before You Begin Additional Resources
Page 6	Overview
Page 7	Requirements
Page 8	Deploying Adobe CS6 Building a CS6 Deployment Package Adding the Deployment Package to Casper Admin Deploying the Deployment Package Installing Products in the Exceptions Folder
Page 17	Reporting on Adobe CS6 Creating a Licensed Software Record Updating Inventory Creating a Licensed Software Report Creating an Application Usage Report Creating a Smart Computer Group
Page 24	Revision History

Introduction

What's in This Guide

This guide provides step-by-step instructions on how to deploy and report on Adobe® Creative Suite® 6 (CS6) with Adobe technologies and the Casper Suite.

Important Concepts

Administrators using this guide should be familiar with the following Casper Suite-related concepts:

- Package management
- Policies and scope
- License management
- Application usage reporting
- Smart computer groups

Before You Begin

Before using the instructions in this guide, make sure you are familiar with the following concepts:

Adobe CS6 Deployment Planning

Adobe recommends that you do some planning before deploying Adobe CS6. For more information, see “Planning for Deployment” in the *Adobe Application Manager Enterprise Edition Deployment Guide 3.1*.

Adobe Application Manager Enterprise Edition 3.1

Deploying Adobe CS6 with the Casper Suite requires Adobe Application Manager Enterprise Edition (AAMEE) 3.1. Before installing AAMEE, make sure you are familiar with the installation guidelines and version requirements.

For more information, see “Deployment Tools” in “Using Adobe Application Manager 3.1 for Enterprise Deployment of Creative Suite 6” of the *Adobe Application Manager Enterprise Edition Deployment Guide 3.1*.

Additional Resources

For more information about the applications, concepts, and processes mentioned in this guide, see the following documentation:

- *Casper Suite Administrator's Guide*
<http://jamfsoftware.com/product-documentation/administrators-guides>
- *Adobe Application Manager Enterprise Edition Deployment Guide 3.1*
http://www.images.adobe.com/www.adobe.com/content/dam/Adobe/en/devnet/creativesuite/pdfs/AdobeApplicationManagerEnterpriseEditionDeploymentGuide_v_3_1.pdf

Overview

In the past, Mac administrators have used the Casper Suite together with Adobe technologies to administer Adobe Creative Suite products in the enterprise. A similar workflow can now be used to administer Adobe CS6.

Administrators can package Adobe CS6 products with AAMEE 3.1 and deploy them with the Casper Suite.

The Casper Suite's reporting capabilities can also help administrators manage Adobe CS6 licenses. Administrators can evaluate license compliance, view and report on the licenses in use, and view how frequently Adobe CS6 is used.

Requirements

To administer Adobe CS6 using the instructions in this guide, you need:

- The JAMF Software Server (JSS) v8.4-8.7
- Casper Admin
- Composer
- Adobe Application Manager Enterprise Edition (AAMEE) 3.1 for Mac
You can download AAMEE 3.1 from Adobe at:
<http://www.adobe.com/devnet/creativesuite/enterprisedeployment.html>
- Adobe CS6 installer media

Deploying Adobe CS6

Deploying Adobe CS6 involves the following steps:

1. Build a CS6 deployment package using AAMEE.
2. Add the deployment package to Casper Admin.
3. Deploy the deployment package.
4. Install products in the exceptions folder.

Building a CS6 Deployment Package

The first step to deploying Adobe CS6 is to build a deployment package using Adobe's custom enterprise deployment tool, AAMEE 3.1.

1. Open AAMEE.
2. If you are opening AAMEE for the first time, read and accept the License Agreement.
3. Choose to build a CS6 Installation package.
4. Enter information on the panes to build the package. For complete instructions, see "Creating a CS6 Installation Package" in the *Adobe Application Manager Enterprise Edition Deployment Guide 3.1*.

JAMF Software makes the following recommendations for deployment packages:

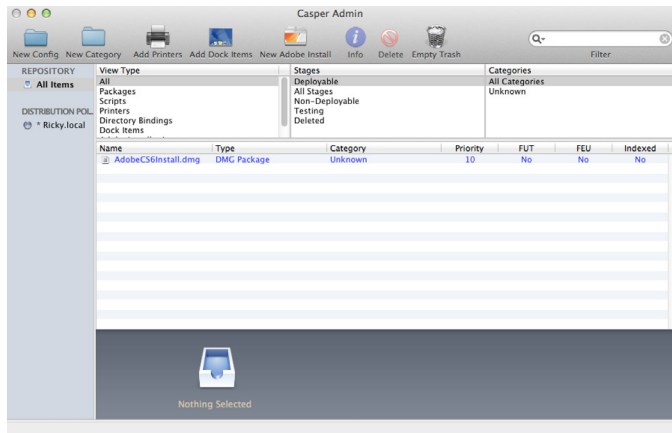
- If you plan to deploy Acrobat® X Pro, include it in a package with other CS6 products instead of deploying it separately.
- Disable Adobe AIR® components in the package. (This option is displayed on the Configuration pane.)
Leaving AIR components enabled limits your deployment options. Packages with AIR components enabled can only be deployed with a login policy, during imaging, or using Self Service. Packages with AIR components disabled can be deployed at any time.
- Configure the package to ignore conflicting processes. (This option is displayed on the Configuration pane.)

When you are finished, AAMEE creates a folder in the location that you specified. (You specified the name and location for the folder on the Media and Package Identification pane in AAMEE.) The folder contains a Build folder that contains the deployment package.

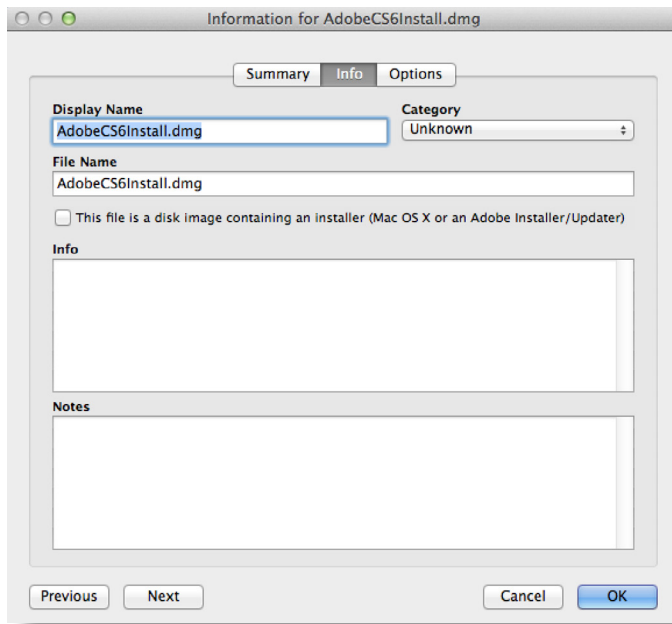
Adding the Deployment Package to Casper Admin

Add the deployment package to Casper Admin so that you can deploy it using a policy.

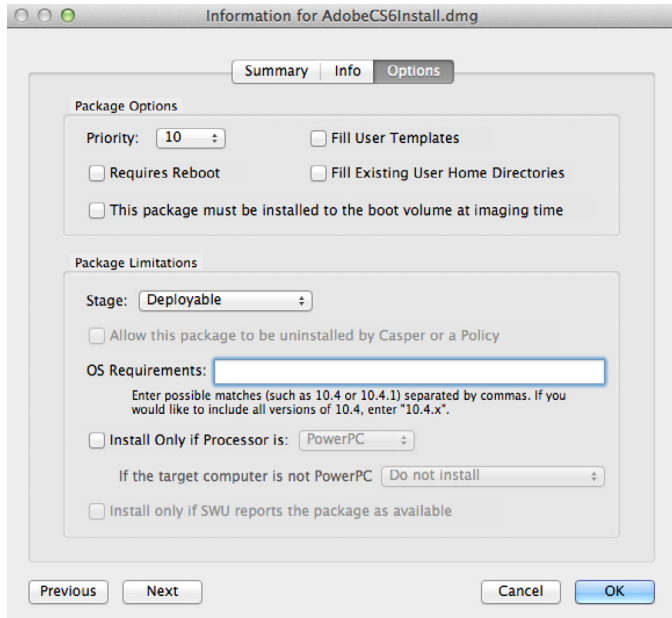
1. Open Casper Admin and authenticate to the JSS.
2. Drag the package to the main repository in Casper Admin.
The package is displayed in blue text until you add it to a category.



3. Double-click the package in the main repository.
4. Click the **Info** tab and choose a category for the package.



5. Click the **Options** tab and choose a priority for the package.
The recommended priority for the deployment package is “10”.



6. Click **OK**.

Deploying the Deployment Package

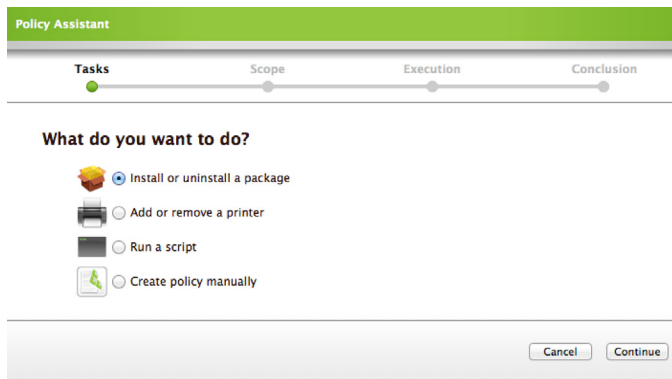
After adding the deployment package to Casper Admin, you can deploy it using a policy.

Important: Do not use the deployment instructions in this guide if the master distribution point in your JSS is a file share distribution point that uses SMB. For deployment instructions in this case, see the following Knowledge Base article:

[Deploying PKGs Created with AAMEE or Creative Cloud Packager](#)

1. Log in to the JSS with a web browser.
2. Click the **Management** tab.
3. Click the **Policies** link.
4. Click the **Create Policy** button.

5. Select the **Install or uninstall a package** option, and then click **Continue**.



6. Follow the onscreen instructions to configure the rest of the policy.

Note: If the package has Adobe AIR components enabled, you must set the trigger as “login” or “Self Service”.

Adobe CS6 is installed on computers in the scope the next time they check in with the JSS and meet the specified criteria.

Installing Products in the Exceptions Folder

Any components that you chose to disable when building the deployment package, such as Adobe AIR, are stored in an Exceptions folder. The Exceptions folder is located in the AAMEE-created folder on the computer that you used to build the deployment package.

After deploying the deployment package, you can install the products that are in the Exceptions folder as desired.

Installing products in the Exceptions folder involves the following steps:

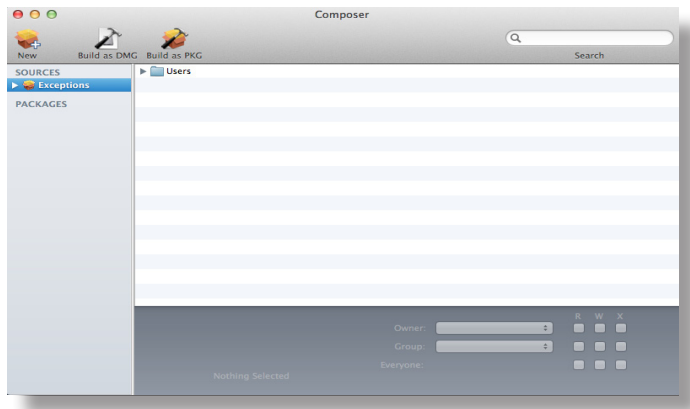
1. Build an Exceptions folder package.
2. Create the install script(s).
3. Add the Exceptions folder package and the install script(s) to Casper Admin.
4. Deploy the Exceptions folder package and the install script(s).


Building an Exceptions Folder Package

The first step to installing products that are in the Exceptions folder is to build a package of the folder using Composer.

1. Create a folder called “AdobeExceptions” in the following location:
/Library/Application Support/JAMF/

2. Move the Exceptions folder from the AAMEE-created folder to the following location:
/Library/Application Support/JAMF/AdobeExceptions/
3. Open Composer and authenticate locally.
If you are prompted to choose a package creation method, click **Cancel**.
4. Drag the Exceptions folder to the sidebar in Composer.
Composer creates a package source from the file and displays it under the Sources list.



5. In the toolbar, click **Build as DMG** .
6. Choose a location to save the package and click **Save**.

Creating the Install Script(s)

Use the commands provided in the “Creating Installers and Uninstallers for Exceptions Components” section of the *Adobe Application Manager Enterprise Edition Deployment Guide 3.1* to create an install script for each product that you want to install.

1. Open a text editor.
2. Create a new file.
3. Type the deployment commands to create the script. For example, if you are installing Adobe AIR, the deployment command would look like this:

```
launchctl bsexec `ps auwwx |grep [l]oginwindow | awk '{ print $2 }'`
/Library/Application\ Support/JAMF/AdobeExceptions/Exceptions/
Adobe\ AIR\ Installer.app/Contents/MacOS/Adobe\ AIR\ Installer -
silent
```

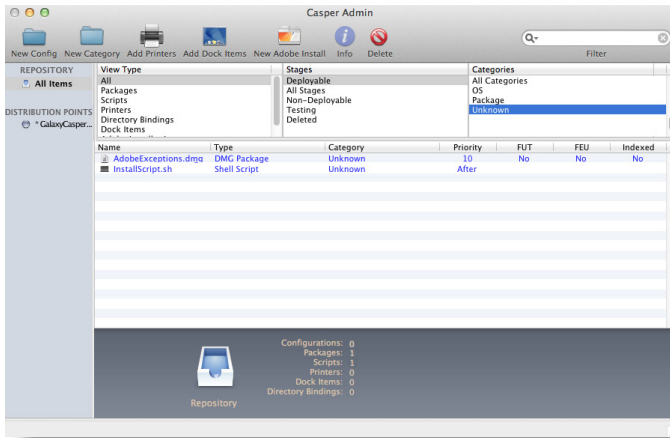
4. Save the file with a .sh file extension. For example, “InstallScript.sh”.

Adding the Exceptions Folder Package and the Install Script(s) to Casper Admin

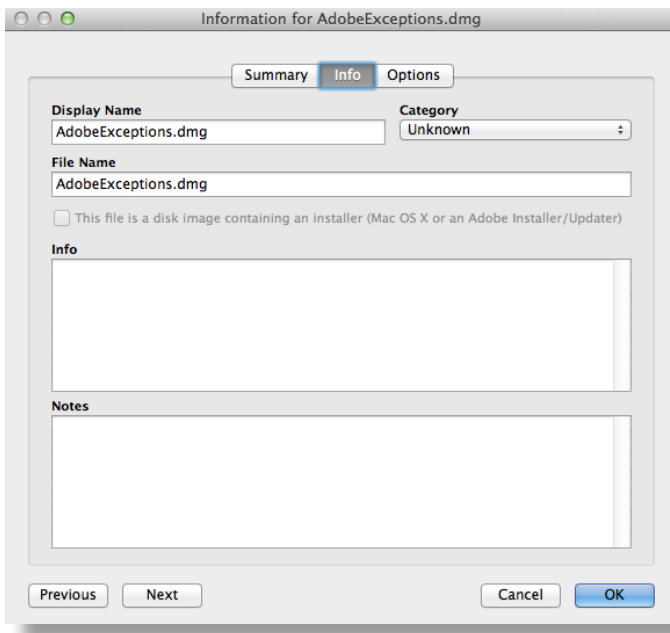
Add the Exceptions folder package and the install script(s) so that you can deploy them using a policy.

1. Open Casper Admin and authenticate to the JSS.
2. Drag the Exceptions folder package and the install script(s) to the main repository in Casper Admin.

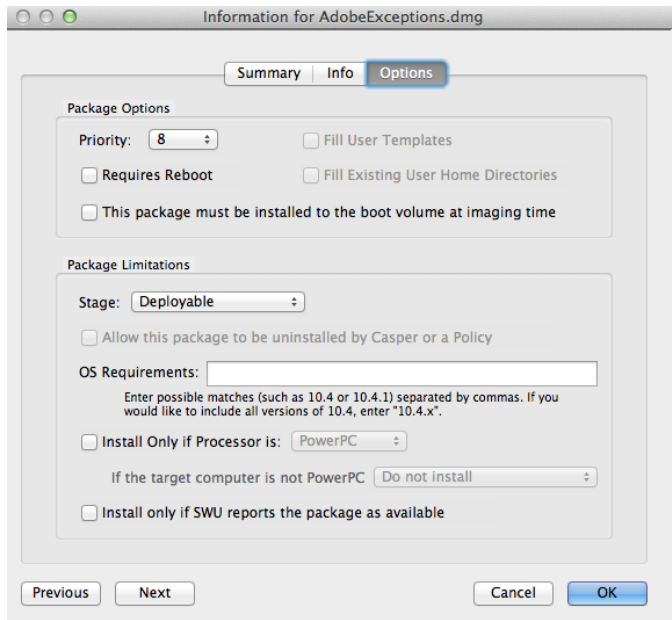
The package and script(s) are displayed in blue text until you add them to a category.



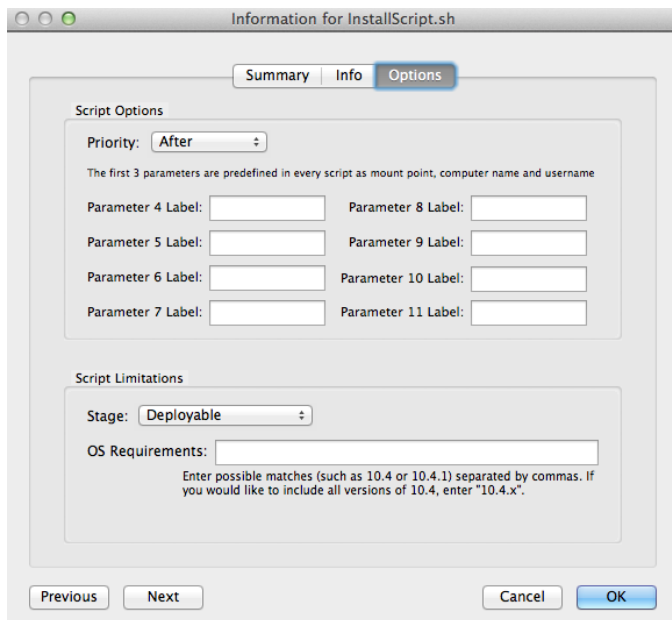
3. Double-click the package in the main repository.
4. Click the **Info** tab and choose a category for the package.



- Click the **Options** tab and choose a priority for the package.
The recommended priority for the Exceptions folder package is "8".



- Click **OK**.
- Double-click the install script in the main repository.
- Click the **Options** tab and verify that the priority is set to "After".

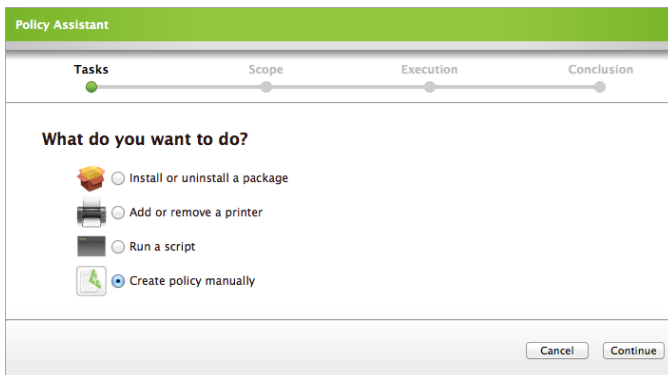


9. Click **OK**.
10. Repeat steps 7-9 for any other install scripts.

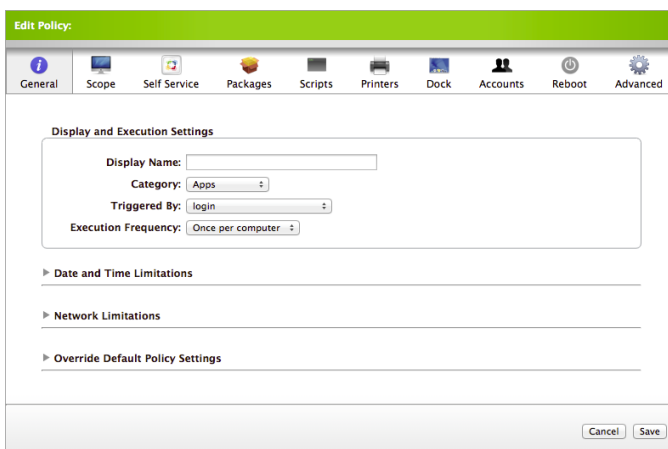
Deploying the Exceptions Folder Package and Install Script(s)

After adding the Exceptions folder package and the install script(s) to Casper Admin, you can deploy them using a policy.

1. Log in to the JSS with a web browser.
2. Click the **Management** tab.
3. Click the **Policies** link.
4. Click the **Create Policy** button.
5. Select the **Create policy manually** option, and then click **Continue**.

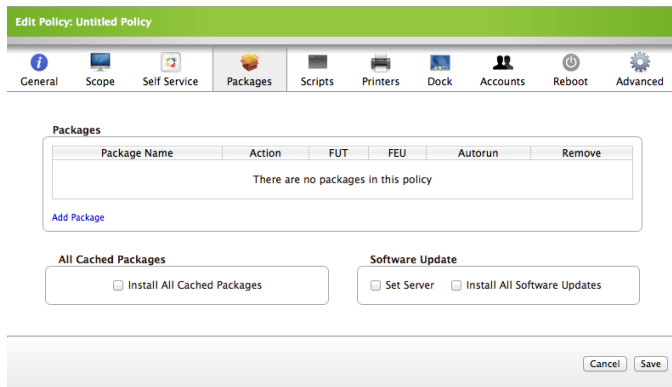


6. On the General pane, enter a display name for the policy. For example, "CS6 Exceptions".

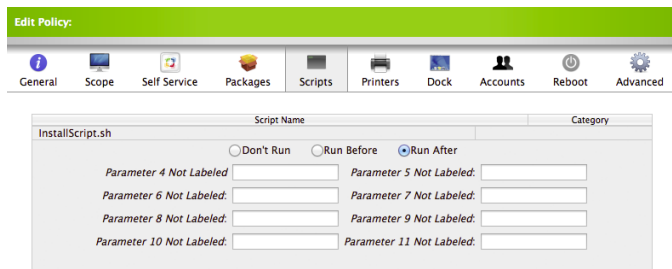


7. Choose "login" from the **Triggered By** pop-up menu.
8. Choose "Once per computer" from the **Execution Frequency** pop-up menu.

9. Click the **Scope** tab and configure the scope of the policy.
10. Click the **Packages** tab, and then click the **Add Package** link.



11. Locate the Exceptions folder package and choose "Install" from the **Action** pop-up menu across from it.
12. Click the **Add Package(s)** button.
13. Click the **Scripts** tab.
14. Click the **Add Script** link.
15. Locate the install script and select the **Run After** option.
This ensures that the script runs after the Exceptions folder package is installed.



16. Click the **Add Script(s)** button.
17. Repeat steps 14-16 for any other install scripts.
18. Click **Save**.

The Exceptions folder package is installed on computers in the scope the next time they check in with the JSS and meet the specified criteria.

Reporting on Adobe CS6

After deploying Adobe CS6, you can evaluate license compliance, view and report on the licenses in use, and view how frequently Adobe CS6 is used.

Reporting on Adobe CS6 involves the following steps:

1. Create a licensed software record.
2. Update inventory.
3. Create a Licensed Software report.
4. Create an Application Usage report.
5. Create a smart computer group.

Creating a Licensed Software Record

The first step to reporting on Adobe CS6 is to create a licensed software record. Licensed software records allow you to store license information in the JSS.

1. Download the licensed software template for the appropriate Adobe CS6 collection from JAMF Nation at:
<https://jamfnation.jamfsoftware.com/licensedSoftwareTemplates.html>
2. Log in to the JSS using a web browser.
3. Click the **Settings** tab.
4. Click the **Licensed Software Management** link.
5. Click the **Upload Licensed Software** button.
6. Click **Choose File** and select the licensed software template that you downloaded in step 1. Then, click **Upload Selected Template**.

7. Choose a platform from the pop-up menu.

Edit Licensed Software: Adobe Creative Suite 6 - Design Standard

Info Licenses Software Definitions

Display Name: Adobe Creative Suite 6 - D

Publisher: Adobe Systems Incorporate

Platform: Any

Send Email Notification on Violation

Remove Software Titles from Inventory Reports

Notes:

Cancel Save

8. Click the **Licenses** tab and click **Add License**.
9. In the **Serial Number 1** and **Serial Number 2** fields, enter serial number(s) for the product as needed.

Edit Licensed Software: Adobe Creative Suite 6 - Design Standard

Info Licenses Software Definitions

License Info

Serial Number 1:

Serial Number 2:

Organization Name:

Registered To:

License For:

Licenses

Concurrent Licenses

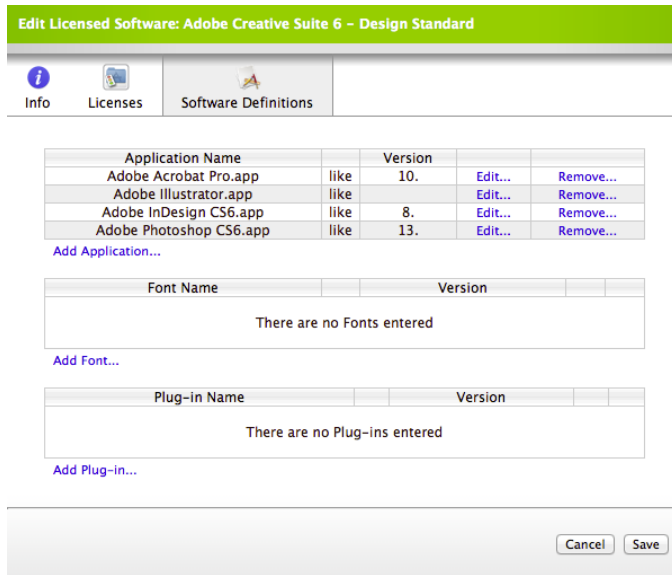
Site License

Notes:

Cancel Store License

10. Make sure that the **License For** option is selected and enter the number of licenses in the **Licenses** field.
11. Click the **Store License** button.

- Click the **Software Definitions** tab and verify that all products in your licensed version of Adobe CS6 are listed.

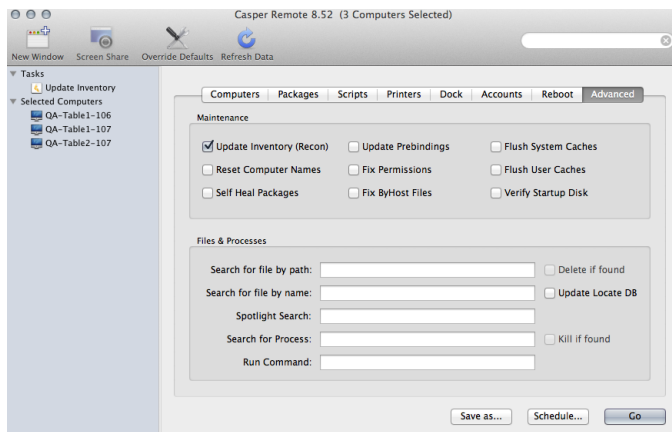


- Click the **Save** button.

Updating Inventory

The JSS must contain up-to-date inventory information before you can evaluate license compliance and view Application Usage logs. You can use Casper Remote to update inventory.

- Open Casper Remote and authenticate to the JSS.
- In the list of computers, select the checkbox for each computer that you want to update inventory for.
- Click the **Advanced** tab and select the **Update Inventory (Recon)** checkbox.
- Click **Go**.

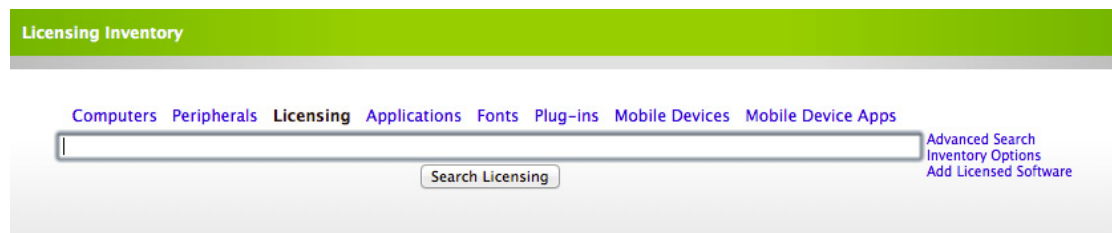


Creating a Licensed Software Report

Licensed Software reports allow you to view the following information about the licenses owned by your organization:

- Number of licenses owned
- Number of licenses in use
- Computers that have the licenses installed

1. Log in to the JSS with a web browser.
2. Click the **Inventory** tab.
3. Click the **Licensing** link above the search field.
4. Enter the name of the licensed software object in the search field.



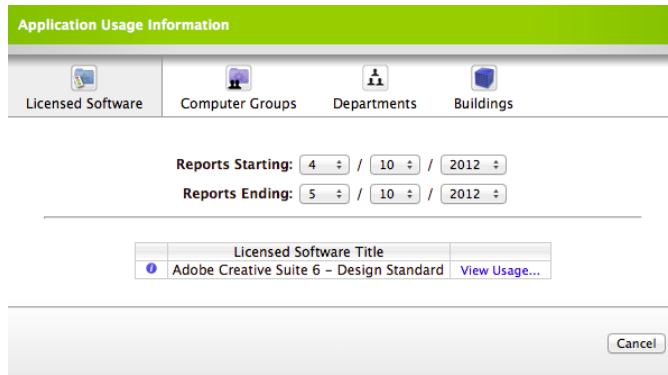
5. Click the **Search Licensing** button, or press the **Enter** key.

Creating an Application Usage Report

Application Usage reports go one step beyond license tracking by allowing you to view which licenses are being used. You can create a computer group based on the results of the report and use it to reclaim unused licenses.

1. Log in to the JSS with a web browser.
2. Click the **Logs** tab.
3. Click **Application Usage** logs.
4. Use the **Reports Starting** and **Reports Ending** pop-up menus to set a date range for the report.

5. Click the **View Usage** link across from the licensed software title for which you want to view full usage details.



6. Generate an Application Usage report as explained in the previous procedure.
7. After clicking the **View Usage** link, click the **Unused Licenses** tab. This displays a list of computers that have unused licenses for the product.
8. Click the **Create Computer Group** button to create a group that contains these computers.
9. Create a policy to uninstall Adobe CS6, and assign the group that you just created as the scope. For detailed instructions on creating a policy to uninstall software, see the "Uninstalling Packages" section in the *Casper Suite Administrator's Guide*.

Creating a Smart Computer Group

Smart computer groups allow you to organize computers that share similar attributes. Use the JSS to create a smart computer group for computers that have Adobe CS6 installed. You can use this smart computer group to reclaim unused licenses.

1. Log in to the JSS with a web browser.
2. Click the **Management** tab.
3. Click the **Smart Computer Groups** link.
4. Click the **Create Smart Group** button.
5. Enter a name for the group, such as "Computers with Adobe CS6".

6. In the list of categories, click the **Add (+)** button across from **Software Information**.

Field	Search Type	Criteria	-	+
Computer Information				+
Location Information				+
Hardware Information				+
Storage Information				+
OS Configuration Information				+
Software Information				+
Purchasing Information				+
Receipts Information				+

7. Click the **Licensed Software** link in the list of items.

Search Items
Licensed Software
Application Title
Application Version
Font Title
Font Version
Plug-in Title
Plug-in Version

8. Leave the text field next to "Licensed Software" blank and click the **Ellipsis (...)** button. Then, click the software title that you want to track.

9. Click the **Save** button.

Edit Smart Computer Group: Adobe Creative Suite 6 – Design Standard

ComputerGroup Name:

Send Email Notification on Change:

Field	Search Type	Criteria	-	+
Computer Information				
				+
Location Information				
				+
Hardware Information				
				+
Storage Information				
				+
OS Configuration Information				
				+
Software Information				
Licensed Software	has	Adobe Creative Suite €	☺	☹
				+
Purchasing Information				
				+
Receipts Information				
				+

Group memberships are updated each time computers check in with the JSS and meet or fail to meet the specified criteria.

Revision History

Revision Date	Changes
8 January 2014	Updated for AAMEE 3.1.