

Administering Adobe Creative Cloud for Enterprise with Jamf Pro

Technical Paper
Jamf Pro 9.0 or Later
23 July 2020



© copyright 2002-2020 Jamf. All rights reserved.

Jamf has made all efforts to ensure that this guide is accurate.

Jamf
100 Washington Ave S Suite 1100
Minneapolis, MN 55401-2155
(612) 605-6625

Adobe, Acrobat, and Creative Cloud are either registered trademarks or trademarks of Adobe Systems Incorporated in the United States and/or other countries.

The CASPER SUITE, COMPOSER®, the COMPOSER Logo®, Jamf, the Jamf Logo, JAMF SOFTWARE®, the JAMF SOFTWARE Logo®, RECON®, and the RECON Logo® are registered or common law trademarks of JAMF SOFTWARE, LLC in the U.S. and other countries.

All other product and service names mentioned herein are either registered trademarks or trademarks of their respective companies.

Contents

4 Introduction

- 4 What's in This Guide
- 4 Important Concepts
- 4 Before You Begin
- 4 Additional Resources

5 Overview

6 Requirements

7 Deploying Adobe Creative Cloud for Enterprise

- 7 Creating an Adobe Creative Cloud Installer Package
- 7 Adding the Installer Package to a Distribution Point
- 9 Deploying the Installer Package

11 Reporting on Adobe Creative Cloud for Enterprise

- 11 Creating a Licensed Software Record
- 15 Updating Inventory
- 17 Evaluating License Compliance
- 17 Viewing License Usage Matches
- 17 Viewing Application Usage Logs

Introduction

What's in This Guide

This guide provides step-by-step instructions on how to deploy and report on Adobe Creative Cloud for Enterprise with Adobe technologies and Jamf Pro.

Important Concepts

Administrators using this guide should be familiar with the following Jamf Pro-related concepts:

- Package management
- Policies and scope
- License management

Before You Begin

Adobe recommends that you do some planning before deploying Adobe Creative Cloud. For more information, see the following website:

<http://helpx.adobe.com/creative-cloud/packager/planning-deploy.html>

Additional Resources

For more information on related topics, see the following resources:

- [*Jamf Pro Administrator's Guide*](#)
- Adobe Creative Cloud for Enterprise webpage
<http://www.adobe.com/products/creativecloud/enterprise.html>
- Adobe Packaging User Guide webpage
<https://helpx.adobe.com/enterprise/package/user-guide.html>

Overview

In the past, Mac administrators have used Jamf Pro together with Adobe technologies to administer Adobe Creative Suite products in the enterprise. Similar workflows can now be used to administer Adobe Creative Cloud.

Administrators can package Adobe Creative Cloud products with the Adobe Admin Console or Adobe Creative Cloud Packager and deploy them with Jamf Pro.

Jamf Pro's reporting capabilities can also help administrators manage Adobe Creative Cloud licenses. Administrators can evaluate license compliance, view and report on the licenses in use, and view how frequently Adobe Creative Cloud is used.

Requirements

To administer Adobe Creative Cloud for Enterprise using the instructions in this guide, you need:

- Jamf Pro 9.0 or later
- Adobe Creative Cloud Packager 1.2 or later, if deploying Creative Cloud 2018 apps or earlier
- Target computers with macOS 10.8.3 or later
- An Adobe ID with access to the Adobe Admin Console
- Enterprise License Key

Deploying Adobe Creative Cloud for Enterprise

Deploying Adobe Creative Cloud involves the following steps:

1. Create an Adobe Creative Cloud installer package.
2. Add the installer package to Jamf Admin.
3. Deploy the installer package.

Creating an Adobe Creative Cloud Installer Package

The first step to deploying Adobe Creative Cloud is to create a Creative Cloud installer package.

Note: For Creative Cloud 2019 apps or later, you must use the Adobe Admin Console instead of Creative Cloud Packager to create the installer package. For more information, see the following documentation from Adobe:

<https://helpx.adobe.com/enterprise/kb/apps-not-available-in-ccp.html>

<https://helpx.adobe.com/enterprise/using/package-apps-admin-console.html>

<https://helpx.adobe.com/enterprise/package/user-guide.html>

For instructions on creating an installer package with Creative Cloud Packager, see the following documentation from Adobe:

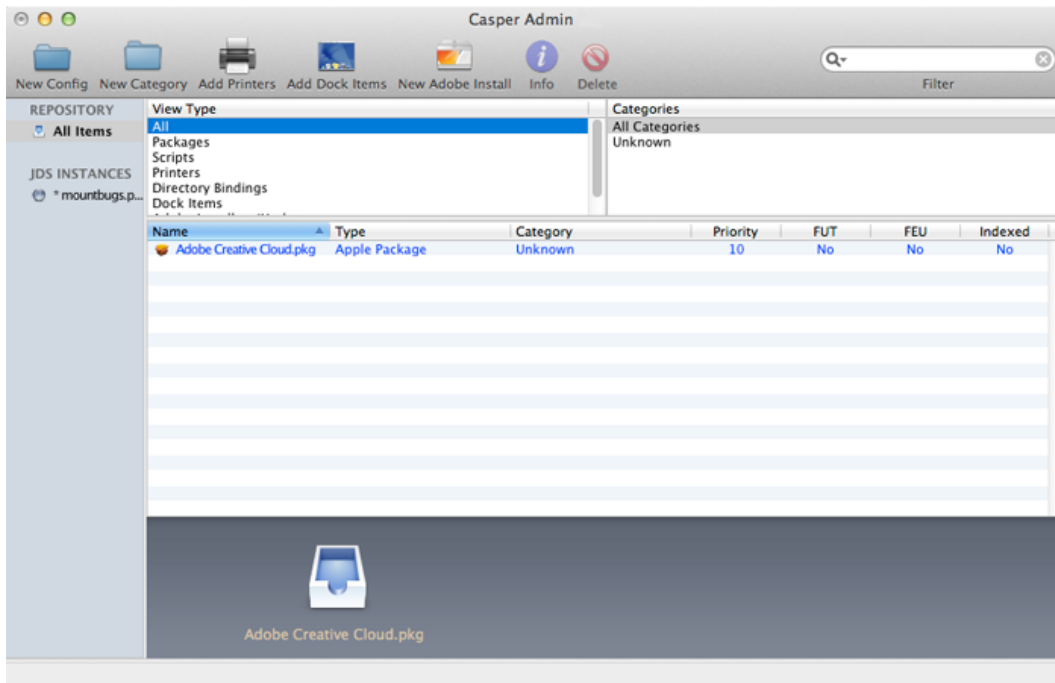
<http://helpx.adobe.com/creative-cloud/packager/creating-packages.html>

Adding the Installer Package to a Distribution Point

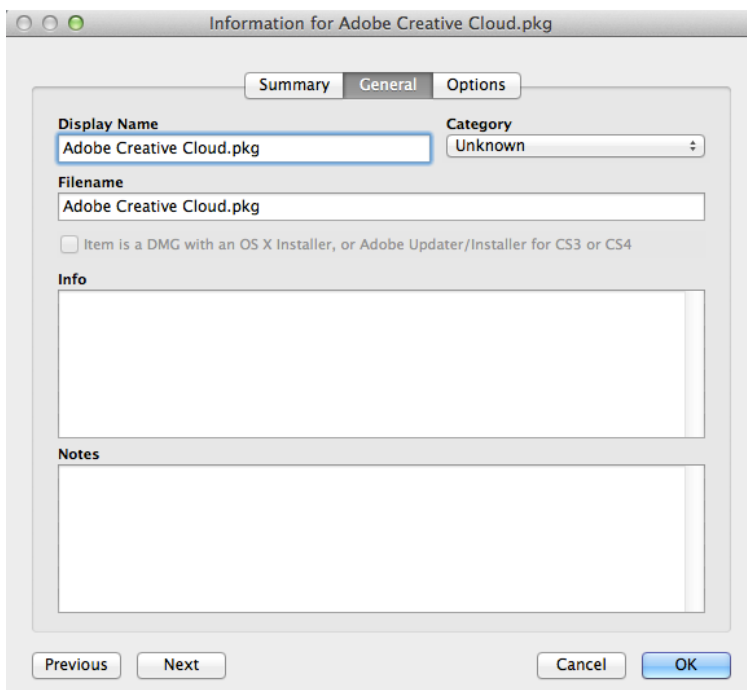
Add the installer package to Jamf Admin so you can deploy it using a policy.

Note: If your principal distribution point is the cloud distribution point, you can also upload the package directly to Jamf Pro. For more information, see [Managing Packages](#) in the *Jamf Pro Administrator's Guide*.

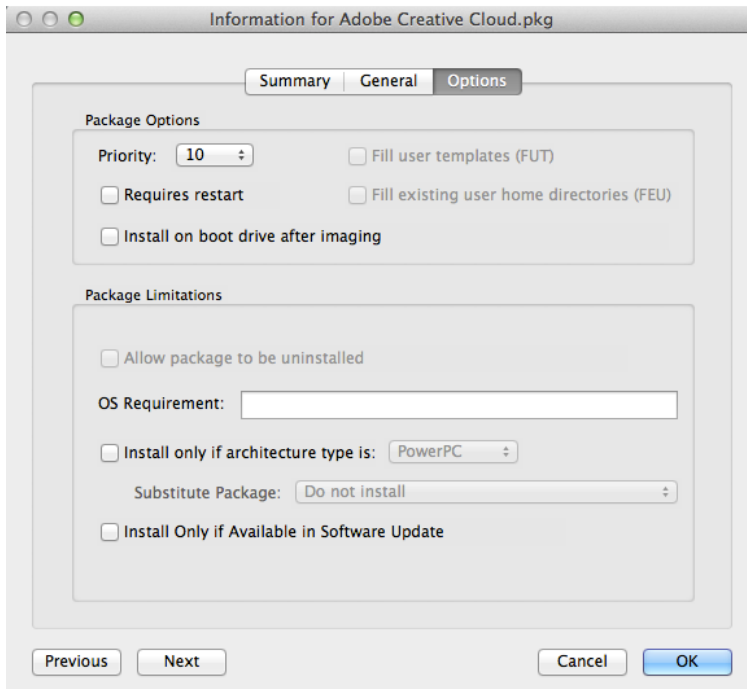
1. Open Jamf Admin and authenticate to the Jamf Pro server.
2. Drag the package to the main repository in Jamf Admin.
The package is displayed in blue text until you add it to a category.



3. Double-click the package in the main repository.
4. Click the **General** tab and choose a category for the package.



5. Click the **Options** tab and choose a priority for the package. The recommended priority for the installer package is "10".



6. Click **OK**.

Deploying the Installer Package

After adding the installer package to Jamf Admin, you can deploy it using a policy.

Note: On Jamf Pro 9.95 or earlier, if the principal distribution point in your environment is an SMB share, use the deployment instructions in the [Deploying PKGs Created with AAMEE or Creative Cloud Packager](#) Knowledge Base article. On Jamf Pro 9.96 or later, uploading the package to Jamf Admin or directly to Jamf Pro will automatically zip the files. The use of a script is not necessary for deployment.

1. Log in to Jamf Pro.
2. Click **Computers** at the top of the page.
3. Click **Policies**.
4. Click **New** + New.
5. In the General payload, enter a display name for the policy. For example, "Install Adobe Creative Cloud".
6. Select **Login** as the trigger.
7. Choose "Once per computer" from the **Execution Frequency** pop-up menu.
8. Select the Packages payload and click **Configure**.
9. Click **Add** for the installer package.

10. Choose "Install" from the **Action** pop-up menu.
11. Specify a distribution point for computers to download the package from.
12. Click the **Scope** tab and configure the scope of the policy.
13. Click **Save**.

Adobe Creative Cloud is installed on computers in the scope the next time they check in with Jamf Pro and meet the criteria in the General payload.

Reporting on Adobe Creative Cloud for Enterprise

After deploying Adobe Creative Cloud, you can evaluate license compliance, view and report on the licenses in use, and view how frequently Adobe Creative Cloud is used.

Reporting on Adobe Creative Cloud involves the following steps:

1. Create a licensed software record.
2. Update inventory.
3. Evaluate license compliance.
4. View license usage matches.
5. View application usage logs.


Creating a Licensed Software Record


The first step to reporting on Adobe Creative Cloud is to create a licensed software record. Licensed software records allow you to store license information in Jamf Pro.

There are two ways to create a licensed software record for Adobe Creative Cloud:

- **Method 1: Manually Create a Licensed Software Record**
Create a licensed software record and specify software definitions according to the name and version of each application, font, and plug-in.
- **Method 2: Create a Licensed Software Record Using Software Identification Tags**
Specify software definitions according to Software Identification Tags associated with each software title.


Method 1: Manually Create a Licensed Software Record


1. Log in to Jamf Pro.
2. Click **Computers** at the top of the page.
3. Click **Licensed Software**.
4. Click **New** .




5. On the General pane, enter a display name for the licensed software record. For example, "Adobe Creative Cloud".
6. Enter "Adobe Systems Incorporated" in the **Publisher** field.
7. Choose "Mac" from the **Platform** pop-up menu.
8. Click the **Licenses** tab.
9. Click **Add** .
10. In the **Serial Number 1** and **Serial Number 2** fields, enter the serial number or numbers for the product as needed.
11. In the **License Count** field, enter the number of licenses owned.
12. Click **Save**.
13. Click the **Software Definitions** tab.

14. Choose "Applications, Fonts, and Plug-ins" from the **Software Definition Type** pop-up menu.
15. Click **Add** above "App Name".
16. Type the name of the application in the **App Name** field.
17. Choose the "is" connector from the pop-up menu.
18. Type the version of the application in the **Version** field.
19. Repeat steps 15-18 for each Adobe application you installed with Adobe Creative Cloud.
20. Click **Save**.

Method 2: Create a Licensed Software Record Using Software Identification Tags

1. Log in to Jamf Pro.
2. Click **Computers** at the top of the page.
3. Click **Licensed Software**.
4. Click **New**  .

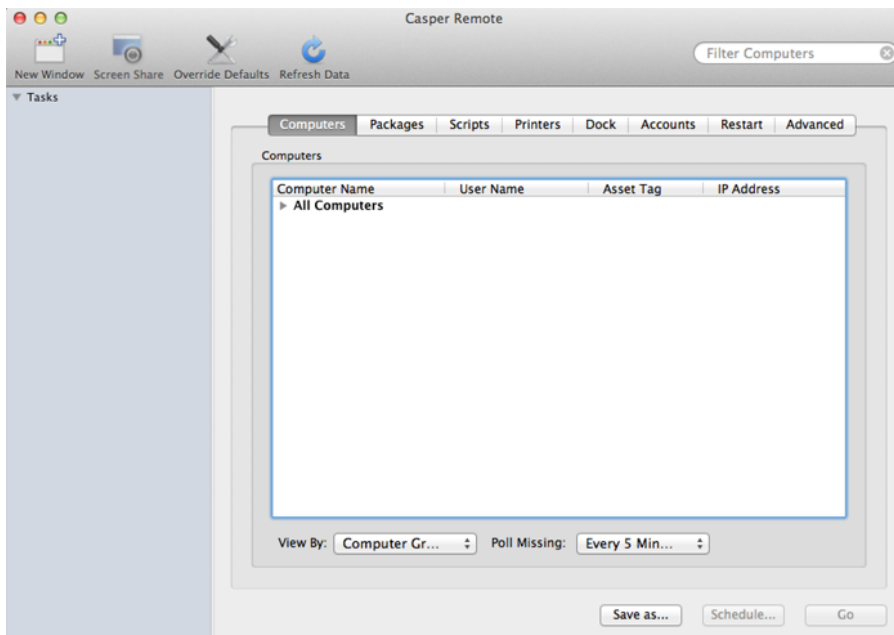
5. On the General pane, enter a display name for the licensed software record. For example, "Adobe Creative Cloud".
6. Type "Adobe Systems Incorporated" in the **Publisher** field.
7. Choose "Mac" from the **Platform** pop-up menu.
8. Click the **Licenses** tab.
9. Click **Add** .
10. In the **Serial Number 1** and **Serial Number 2** fields, enter the serial number or numbers for the product as needed.
11. In the **License Count** field, enter the number of licenses owned.
12. Click **Save**.
13. Click the **Software Definitions** tab.

14. Choose "Software ID Tags" from the **Software Definitions Type** pop-up menu.
15. Click **Browse**  next to the **Reg ID** field and choose a registration identifier.
16. Click **Add** .
17. Click **Browse**  next to the **Software ID Tags** field and choose a software identifier.
18. Select the activation statuses you want to include in the software definitions.
19. Repeat steps 15-18 for each Adobe application you installed with Adobe Creative Cloud.
20. Click **Save**.

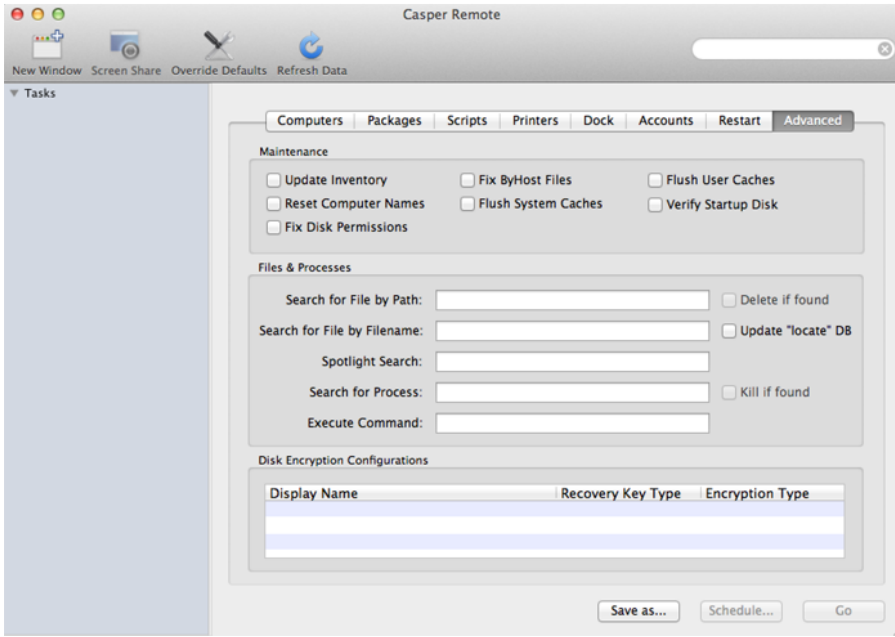
Updating Inventory

Jamf Pro must contain up-to-date inventory information before evaluating license compliance, viewing license usage matches, and viewing Application Usage logs. You can use Jamf Remote to update inventory.

1. Open Jamf Remote and authenticate to the Jamf Pro server.
2. In the list of computers, select the checkbox for each computer that you want to update inventory for.



3. Click the **Advanced** tab and select the **Update Inventory** checkbox.



4. Click **Go**.

Evaluating License Compliance

You can evaluate Adobe Creative Cloud license compliance by viewing the licensed software record in Jamf Pro and comparing the number of licenses in use to the number of licenses owned.

1. Log in to Jamf Pro.
2. Click **Computers** at the top of the page.
3. Click **Licensed Software**.

The Adobe Creative Cloud licenced software record is displayed in a list, along with the number of licenses in use and the number of licenses owned.

Viewing License Usage Matches

You can view a list of computers with Adobe Creative Cloud licenses in use (called “license usage matches”).

1. Log in to Jamf Pro.
2. Click **Computers** at the top of the page.
3. Click **Licensed Software**.
4. Click the Adobe Creative Cloud licensed software record.
5. Click **View Matches**.

Note: This button is only displayed if the licenses associated with the record are in use on managed computers.

A list of license usage matches is displayed.

Viewing Application Usage Logs

You can find out how frequently Adobe Creative Cloud is being used by viewing the Application Usage logs for the licensed software record. This allows you to view the amount of time that Adobe Creative Cloud was open in the foreground on computers.

1. Log in to Jamf Pro.
2. Click **Computers** at the top of the page.
3. Click **Licensed Software**.
4. Click the Adobe Creative Cloud licensed software record.

5. Click **View Logs**.

Note: This button is only displayed if the licenses associated with the record are in use on managed computers.

Application Usage logs for the record are displayed.