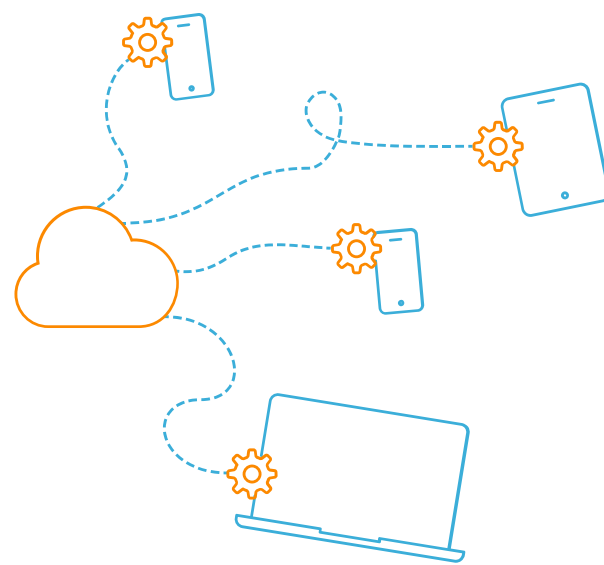


Getting Started

WITH Jamf Now



Welcome to the Jamf Now family!

We're excited that you've chosen Jamf Now to manage your Apple devices.

The following guide will help you get up and running. If you have any questions, don't hesitate to reach out via our [support center](#) or [email](#).

BEFORE YOU BEGIN

Have your account ready

If you haven't already, [create an account](#) and have it handy for the following tutorial.

Use a supported platform

Before beginning setup, make sure you are using a supported device and browser.

- Device: Mac, PC
- Browser: Safari, Chrome, Firefox

WALKTHROUGH

1



Blueprints

Blueprints are the primary way you tell devices how to function while under management with Jamf Now. Blueprints control many aspects of device management, including:

- Distributing apps
- Configuring security settings
- Restricting Safari, iMessage and more.

[Set up Blueprints](#)

2



Apps & Volume Purchasing

Volume Purchasing is a free service from Apple that allows you to manage apps in bulk. Volume Purchasing is the best way to save time and start managing apps across your organization today.

[Set up Volume Purchasing](#)

3



APNs

The Apple Push Notification service (APNs) is how you create a trusted relationship between your devices, Apple and Jamf. This step is required before you can enroll devices.

[Set up APNs](#)

4



Enroll Devices

There are two ways to manage devices in Jamf Now:

Open Enrollment is a form of management that is most commonly used for employee-owned hardware.

OR **Supervision** is a higher form of management that is primarily used for company-owned devices through Auto-Enrollment.

[Set up Open Enrollment](#)

[Set up Auto-Enrollment](#)

5



Support

That's it! If you need additional help, our support team is standing by.



[Chat support](#)



[Email support](#)