



# Education Technology Mistakes to Avoid

Device Enrollment Snafus



As part of our education technology summer school series, we're examining the five most common mistakes that plague school districts, IT, educators and curriculum owners when deploying and utilizing iPad devices.



In part two of our series, we look at the “no Device Enrollment Program (DEP) for us” scenario that often leaves schools wondering how to get all of their iPad devices — regardless of where or how they were purchased — enrolled into management.

If you've ever purchased iPad devices through a retailer like Best Buy, you've most likely had questions about how to get these devices enrolled in Apple School Manager (formerly DEP). Read on for step-by-step guidance on enrolling your independently purchased iPad devices right alongside your Apple-purchased.



SCENARIO

2

## No Device Enrollment Program (DEP) for us.

Your devices were purchased through a retailer like Best Buy and not enrolled into DEP (now called Apple School Manager). You're being told that not all is lost, you can manually enroll your iPad devices into Apple School Manager using Apple Configurator. Great, but you're not completely up to speed on the process. How does it work and what do you need to do to move forward?



**What you've been told is true.** Apple Configurator 2.5 allows you to add iOS devices to Apple School Manager, regardless of where the devices were purchased. One thing to note, once the device is added to Apple School Manager, it is considered "provisionally managed" for 30 days where the user/device can leave management during this grace period. After 30 days, this option is no longer displayed.



# With these steps, all iPad devices running iOS 11 or higher can be enrolled in Apple School Manager.



1

Connect the iPad to the host Mac using a Lightning to USB cable. If prompted, tell the Mac to “trust” the computer.



2

In Apple Configurator, verify that the device is displayed and that the iPad is not currently supervised.

*Make a note of the device’s serial number; this is needed when linking your MDM server to Apple School Manager.*



3

Select the device and hit the “Prepare” button. Select the following options:

- Prepare with Manual Configuration.
- Add to Device Enrollment Program (now Apple School Manager).
- Allow devices to pair with other computers.



4

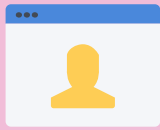
Enroll the device into your MDM server.

- Select “New Server” and define the server name and host URL.
- If you are prompted with an “Unable to verify the server’s enrollment URL”, you can skip past this message and simply hit “Next”.



5

Add the trust anchor certificates for your MDM server by selecting the appropriate certificate(s) displayed.



6 Sign into Apple School Manager using the same Apple ID and password you use to enroll in Apple School Manager.



7 Generate (first time using Apple Configurator) or choose an existing supervision identity.



8 Select "Prepare" to prepare your iPad for enrollment.



9 Log into [deploy.apple.com](https://deploy.apple.com) to assign the Apple School Manager managed device to your MDM server. To do this, leverage the device serial number you noted earlier.



10 You can now turn on the device and walk through the Setup Assistant. You will be prompted by the Remote Management screen, indicating your enrollment has been successful.

**Voila!**

Your independently purchased iPad is now a part of your Apple School Manager instance and can be managed right alongside your Apple-purchased iPads.

A win for all in the form of:



### District leaders

No need to buy new Apple hardware to provide a consistent learning experience to students.



### IT

All management can be established simply and consistently; no need to manage Apple purchased devices differently from non-Apple purchased devices.



### Instructional technologists

Help teachers seamlessly integrate technology into their lesson plans knowing that all devices have consistent access to learning materials.



### Teachers

Have the ability to assist students with their learning regardless of how the device was initially purchased — one less stress and consideration for educators.



A tool up for the education task.



Download our full **5 Technology Mistakes to Avoid this Summer** guide to walk through four additional scenarios.

By conquering these five scenarios, you're well on your way to delivering the best education experience to your users, but your school is most likely going to need more down the road (or now).

[Read Now](#)



**iPad deployment procrastination**



**Transitioning to Apple School Manager**



**Unlocking locked iPad devices**



**Deploying the right apps and content**

When it comes to Apple device management, one solution rises to the head of the class — Jamf Pro. More than 6,000 schools rely on Jamf to help them deploy, inventory and secure over 7 million devices. So, whether you need help with one of the above scenarios, or have a whole new situation on your hands, we can help.

**Take Jamf Pro for a free test drive and start getting more out of your education technology today.**

[Request Trial](#)

