



# Education Technology Mistakes to Avoid

App Deployment Mayhem



As part of our education technology summer school series, we're examining the five most common mistakes that plague school districts, IT, educators and curriculum owners when deploying and utilizing iPad devices.



In the conclusion of our five-part series, we look at the “who needs access to what and when” scenario that often leaves schools wondering what to do with the apps once a student graduates or drops a class, or how to get new students the resources they need the minute they turn on their device.

If you've ever wanted a tutorial on best practices for app management, keep reading for step-by-step guidance on quickly going from app purchase to deployment.

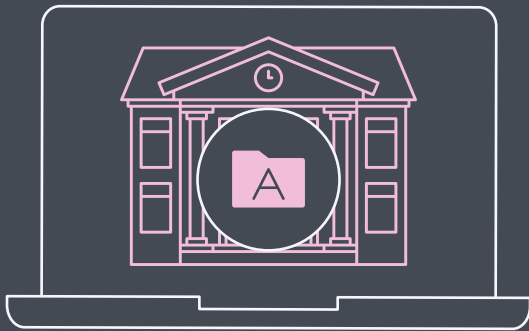


SCENARIO

5

## Who needs access to what and when.

With graduating students leaving and new students coming in, what do you do with all of your apps? How do you get this group of students what they need on their devices the minute they turn them on? If a student drops a class and doesn't need a particular app anymore, do you need to reset the device and start over?



With more than **75,000** education apps available in the **App Store**, the possibilities are nearly endless — but can seem daunting at the same time.

With an MDM solution in place, school-issued apps can be deployed directly to devices or users. The apps are owned by the school and don't require Apple IDs. School data is secure and can't be exported. Apps can even be pre-configured with settings to customize apps for personalized learning.



**When deploying App Store apps via Apple School Manager, you gain extra security and configuration for that app. Here's what's possible:**



### **Managed Apps**

Introduced in iOS 5, managed apps differ from a standard app because they are flagged as owned by a school. Specifically, managed apps are distributed via MDM technology and can be configured and reassigned by MDM.



### **Managed Open In**

Managed Open In takes the concept of managed apps a step further by controlling the flow of data from one app to another. With MDM, schools can restrict what apps are presented in the iOS share sheet for opening documents. This allows for truly native data management without the need for a container.



### **App Configurations**

Sometimes deploying an app isn't enough and you'd like to pre-customize some of the settings. This is the premise for app configurations. App developers can define what settings can be preconfigured by an MDM server for their app. For example, you could deploy the Socrative app with the server URL pre-populated, so users only need to enter their username and password to get the app up and running.





## Quickly go from app purchase to deployment

Another case for Apple School Manager to help you streamline your app purchases and deployments: you can go from start to finish in four steps.



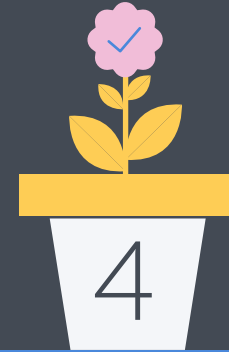
Add your MDM server to the Apple School Manager portal. To learn how to sign up for Apple School Manager, see scenario three.



Find and purchase app licenses from the Apple School Manager web store. You will also need to “purchase” free apps.



Add your app licenses to your MDM server, including free apps.



Apps are deployed directly to the device. No interaction or Apple ID required.

If a student drops a class or leaves school, simply retract the app license and redistribute as needed.



## On-demand access to apps and resources

To make it even easier on students and teachers to access the apps they need, when they need them, you can create your own app catalog. To do this, ensure your MDM solution provides the ability to create a custom app catalog, so you can pre-populate apps and assets and make them available to users.

Instead of submitting a help ticket for app installs, students and teachers simply navigate to your app catalog and download the IT-approved resource.

With an automated way to put apps on user devices, and an efficient way to empower teachers and students (**while saving you time**), app dilemmas will be a thing of the past, and leave people saying:



### District leaders

We know that our app purchases are going to good use, and we can even save money by redistributing apps.



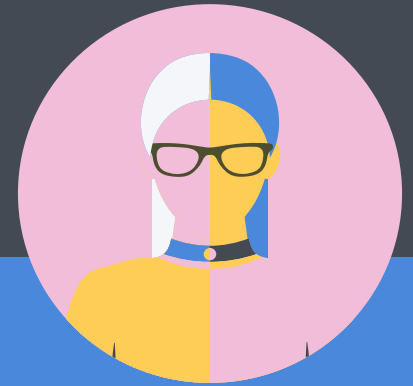
### IT

Love that we're eliminating routine help tickets and getting the apps to our students and educators exactly when they want them.



### Instructional technologists

The App Store is our oyster. We have our pick of purchasing, distributing and leveraging thousands of education apps for our curriculum.



### Teachers

Apps are there when we and students need them. No more bugging IT and wasting precious classroom time.



A tool up for the education task.



Download our full 5 Technology Mistakes to Avoid this Summer guide to walk through four additional scenarios.

By conquering these five scenarios, you're well on your way to delivering the best education experience to your users, but your school is most likely going to need more down the road (or now).

[Read Now](#)



iPad deployment procrastination



Device enrollment snafus



Evading Apple School Manager



Locked iPad Disruptions

When it comes to Apple device management, one solution rises to the head of the class — Jamf Pro. More than 6,000 schools rely on Jamf to help them deploy, inventory and secure over 7 million devices. So, whether you need help with one of the above scenarios, or have a whole new situation on your hands, we can help.

Take Jamf Pro for a free test drive and start getting more out of your education technology today.

[Request Trial](#)

