



Education Technology Mistakes to Avoid

Evading Apple School Manager



As part of our education technology summer school series, we're examining the five most common mistakes that plague school districts, IT, educators and curriculum owners when deploying and utilizing iPad devices.



In part three of our series, we look at the “all or nothing with Apple School Manager” scenario that often leaves schools wondering when and how to transition to Apple School Manager, and once they do, what features they should be using.

If you're not already enjoying the device and classroom management benefits of **Apple School Manager**, read on for step-by-step guidance on migrating to Apple School Manager, creating and importing classes, and tips for getting the most out of Apple's education service.



SCENARIO

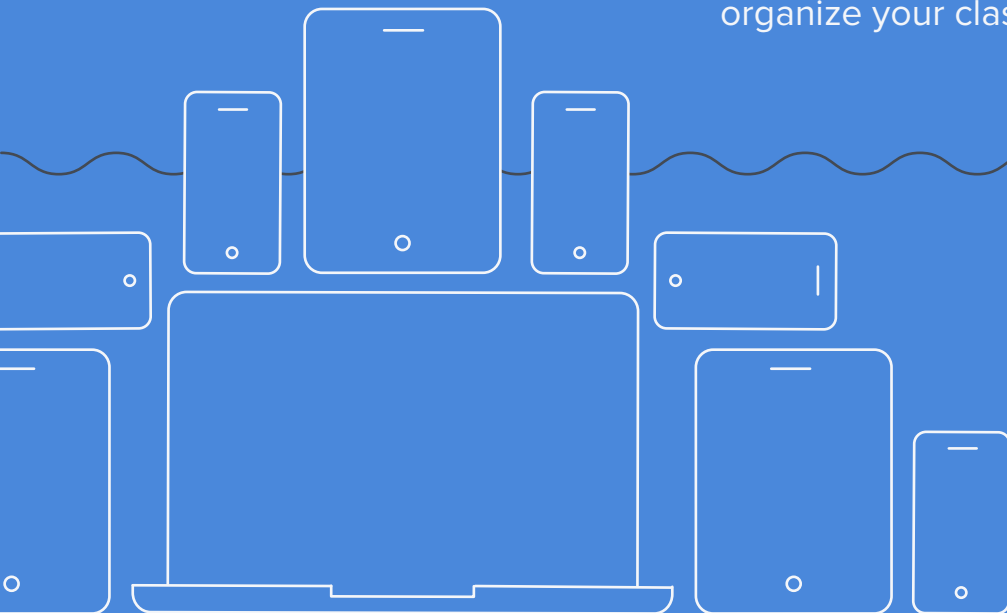
3

All or nothing with Apple School Manager.

Apple is telling you to start using Apple School Manager to manage your devices. You have everything enrolled in the Device Enrollment Program (DEP). How do you transition?

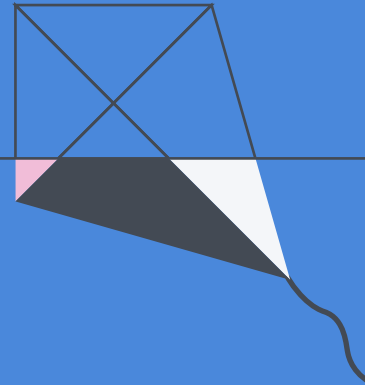
Also, Apple School Manager is a super robust service. Do you need every single feature? You're offering 1-to-1 iPads, do you need to leverage Managed Apple IDs and Shared iPad?

Oh, and how do you get your student, classroom and grade level data imported properly? Once imported, how do you organize your classes within Apple School Manager?



For starters, adoption of Apple School Manager is a good thing.

This education-specific portal consolidates DEP and Apple's Volume Purchase Program (VPP), giving you a centralized location to manage education tasks and achieve greater control over accounts and classes.



With Apple School Manager and mobile device management (MDM), you can:



Create Managed Apple IDs and dynamically update user information, as well as organize classes through integration with your school's Student Information System (SIS).



Set up iPad devices for shared use and allow students to log in to their device. Upon logging in, students can pick up right where they left off and benefit from a customized experience on their shared device.



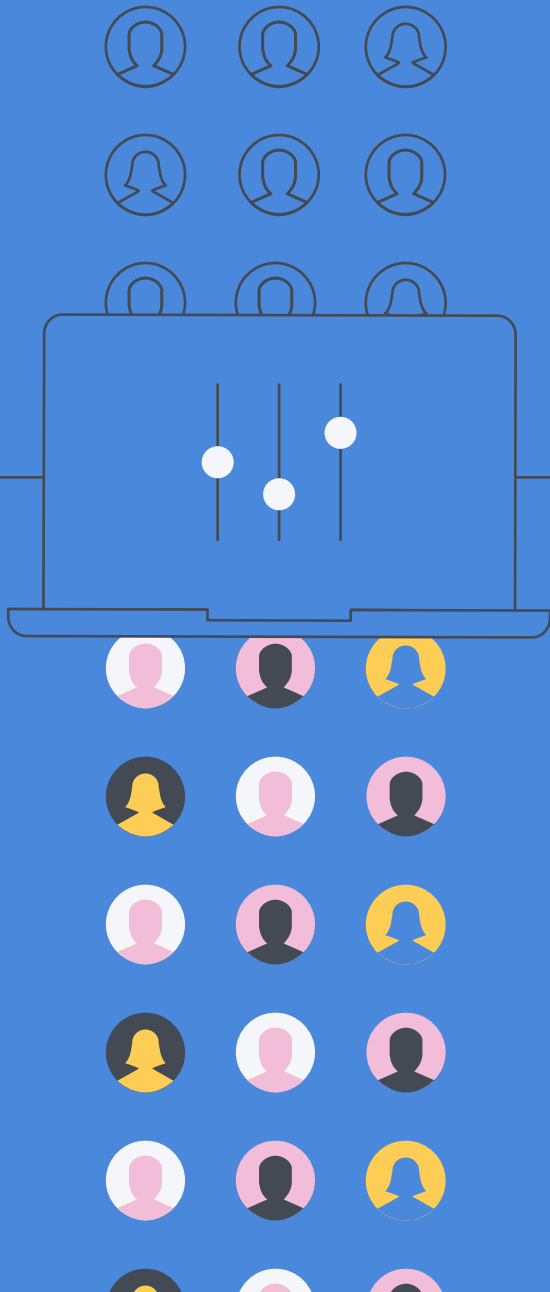
Automate device enrollment and deployment of iPad, iPhone, Mac and Apple TV devices in schools so students are equipped with the learning resources they need the minute they turn on their device.



Strengthen a teacher's ability to utilize Apple's Classroom app and guide students to the appropriate website or app, share work to an Apple TV, and perform routine management tasks such as password resets.



Migrating to Apple School Manager



Per Apple’s guidance, prior to upgrading to Apple School Manager, you need to consolidate your existing DEP and VPP accounts (if you have any) under a single Apple Deployment Program account. If you can log in at deploy.apple.com, you have an existing Apple Deployment Program account. Your account may include DEP, VPP or both.

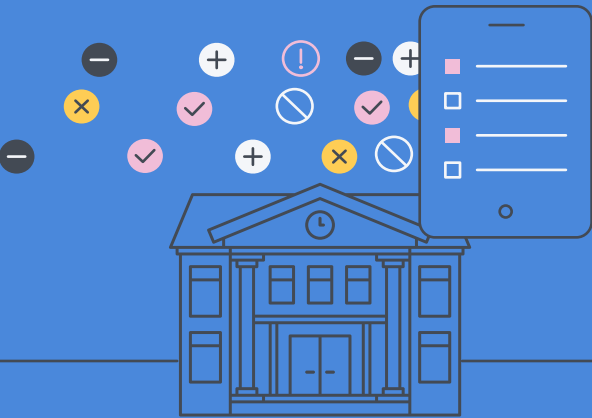
If the same Deployment Program Apple ID is used for DEP and VPP, you’re all set to upgrade. If you use different Apple IDs for your various DEP and/or VPP accounts, you’ll need to contact AppleCare and ensure all accounts get associated to your main Apple Deployment Program account prior to upgrading to Apple School Manager.

If your school doesn’t have an existing Apple Deployment Program

account, you can enroll and upgrade your existing VPP account to prepare for migration. When you upgrade your Apple Deployment Program account to Apple School Manager, you’ll be asked to enter your school’s website. Apple School Manager uses a school’s website as the base for the default domain for their Managed Apple IDs.

For new Apple customers who have never used DEP or VPP, you can simply sign up for Apple School Manager and get started.

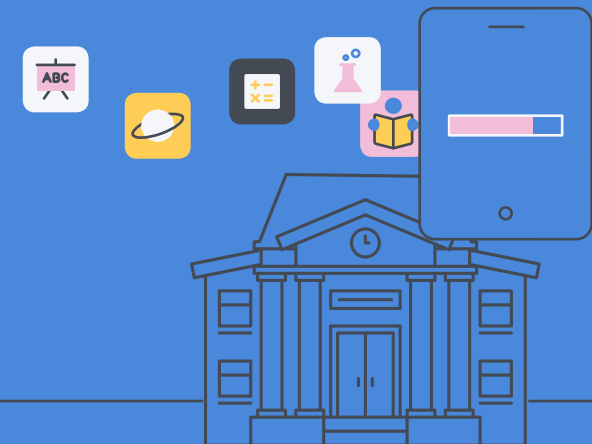
You may not need everything in Apple School Manager



If your school is deploying a 1-to-1 iPad program, you may not need to leverage the Shared iPad features. And that's OK! No need to add unnecessary management capabilities to your server. Simply use what you need and save the rest for a rainy day.

Apple wants to meet all schools where they are at. That's why Apple School Manager comes with so many incredible features. Some may use them; some may not. But they are readily available if a school's technology initiative evolves.

Importing classes with Apple School Manager



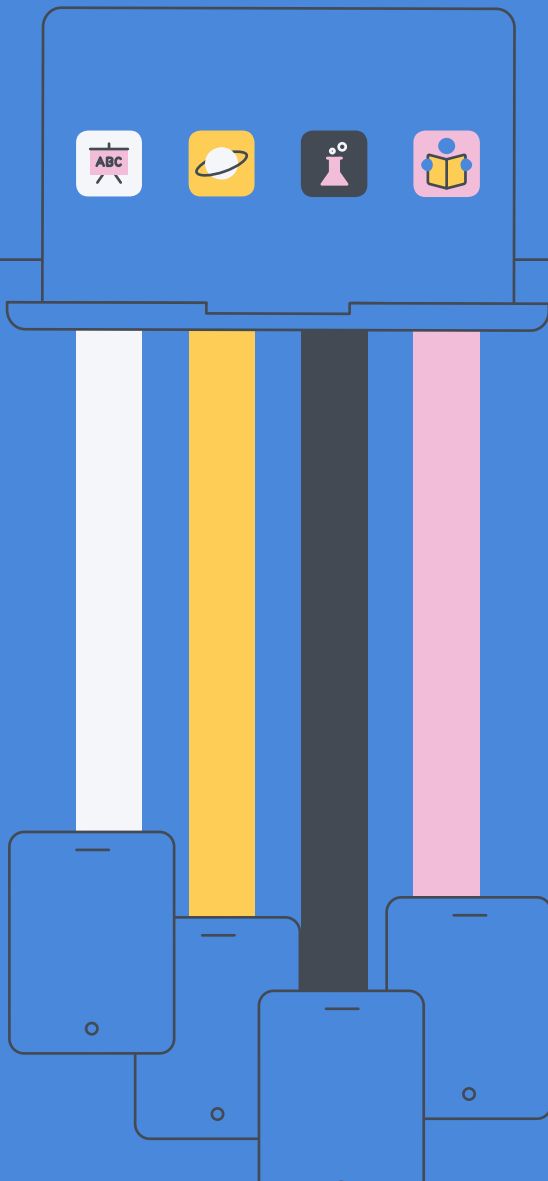
Apple School Manager integrates directly with Powerschool, SunGARD eSchoolPLUS and Infinite Campus. Many other SISs offer pre-formatted exports for SFTP upload. Apple School Manager provides CSV templates to integrate with any SIS vendor.

Classes can be populated automatically by linking your SIS or by manually creating classes within your MDM solution. Student photos are an optional enhancement that IT admins can host and configure for Classroom and Shared iPad.

Automating Apple School Manager class creation

To accomplish a seamless Apple ecosystem integration, link your MDM solution to Apple School Manager. By importing classes from Apple School Manager, users will be added and updated as SIS changes are propagated through Apple School Manager. These imported classes can be used with the Classroom app, Shared iPad, device assignment, app deployment and more.

Importing classes first will automatically import the users associated with those classes. Any new students or instructors that get added to a class within Apple School Manager will sync to the MDM solution.



For schools with a significant number of users or classes, you can segment your imports. For instance, it's possible to import all first graders, followed by all second graders. Similarly, you can import a subset of classes at a time. Importing users and classes separately can improve the speed and integrity of large imports. The best results are achieved by limiting user imports to fewer batches at a time. Importing users before classes can also streamline the class import performance.

Long story short, embrace and use Apple School Manager as it best fits your needs. Those that you support will thank you (and you'll be thanking yourself):



District leaders

School is using the latest and greatest in education technology and empowering teachers and students to do their best work in the classroom.



IT

One management portal to manage all users and devices, with automated workflows structured along the way.



Instructional technologists

Simple classroom creation and SIS integration so students and teachers are empowered with the curriculum assets they need.



Teachers

Leverage Classroom app and enjoy the easiest way to manage student devices and guide them to the appropriate learning resources.



A tool up for the education task.



Download our full 5 Technology Mistakes to Avoid this Summer guide to walk through four additional scenarios.

By conquering these five scenarios, you're well on your way to delivering the best education experience to your users, but your school is most likely going to need more down the road (or now).

[Read Now](#)



iPad deployment procrastination



Device enrollment snafus



Unlocking locked iPad devices



Deploying the right apps and content

When it comes to Apple device management, one solution rises to the head of the class — Jamf Pro. More than 6,000 schools rely on Jamf to help them deploy, inventory and secure over 7 million devices. So, whether you need help with one of the above scenarios, or have a whole new situation on your hands, we can help.

Take Jamf Pro for a free test drive and start getting more out of your education technology today.

[Request Trial](#)

