



SCCM Plug-in User Guide

Version 3.41

JAMF Software, LLC
© 2015 JAMF Software, LLC. All rights reserved.

JAMF Software has made all efforts to ensure that this guide is accurate.

JAMF Software
301 4th Ave S Suite 1075
Minneapolis, MN 55415
(612) 605-6625

Under the copyright laws, this publication may not be copied, in whole or in part, without the written consent of JAMF Software, LLC.

The CASPER SUITE, COMPOSER®, the COMPOSER Logo®, JAMF SOFTWARE®, the JAMF SOFTWARE Logo®, RECON®, and the RECON Logo® are registered or common law trademarks of JAMF SOFTWARE, LLC in the U.S. and other countries.

Microsoft and Windows are registered trademarks of Microsoft Corporation in the United States and/or other countries.

All other product and service names mentioned are the trademarks of their respective companies.

Contents

Page 4	Overview
Page 4	Requirements
Page 5	Installing the JSS SCCM Proxy Service
Page 6	Upgrading the SCCM Plug-in
Page 7	Troubleshooting the JSS SCCM Proxy Service Changing the JSS SCCM Proxy Service Logging Level JSS SCCM Proxy Service Helper
Page 9	Release History
Page 10	Known Issues

Overview

The SCCM plug-in pulls inventory information from the JAMF Software Server (JSS) to the JSS SCCM Proxy Service, and then to Microsoft's System Center Configuration Manager (SCCM). It uses the JSS API to ensure that SCCM always has the most up-to-date hardware and software information for the computers and mobile devices in your JSS.

Requirements

To install the JSS SCCM Proxy Service, you need:

- A Windows computer with Microsoft .NET Framework 4
- The ISV Proxy and CA certificates configured

For instructions, see the [Configuring the Certificates for the SCCM Plug-in v3.40 or Later](#) Knowledge Base article.

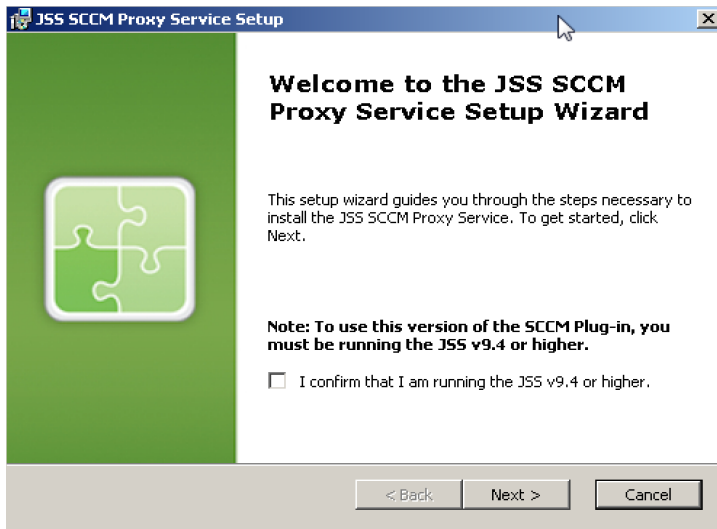
To install and configure the SCCM plug-in, you need:

- Microsoft's System Center Configuration Manager (SCCM) 2012
- The JSS v9.4 or later
- Access to the JSS host server
- (A JSS user account with privileges to read:
 - Computers
 - Smart computer groups
 - Static computer groups
 - Mobile devices
 - Smart mobile device groups
 - Static mobile device groups

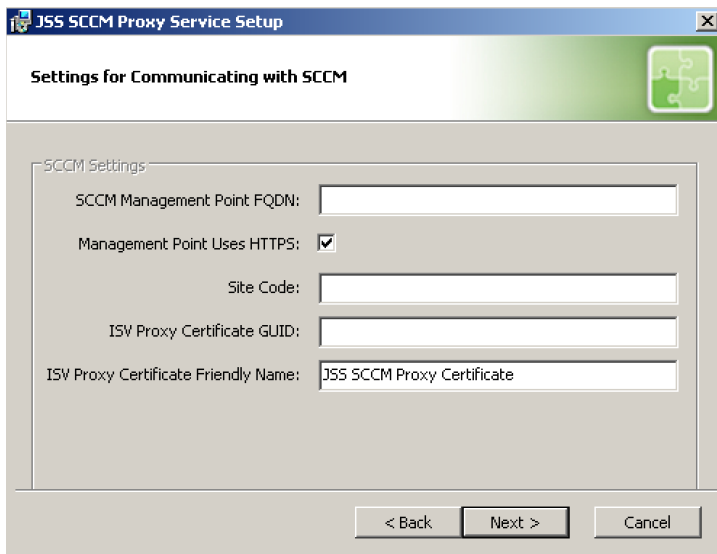
For instructions on granting privileges to JSS user accounts, see the *Casper Suite Administrator's Guide*.

Installing the JSS SCCM Proxy Service

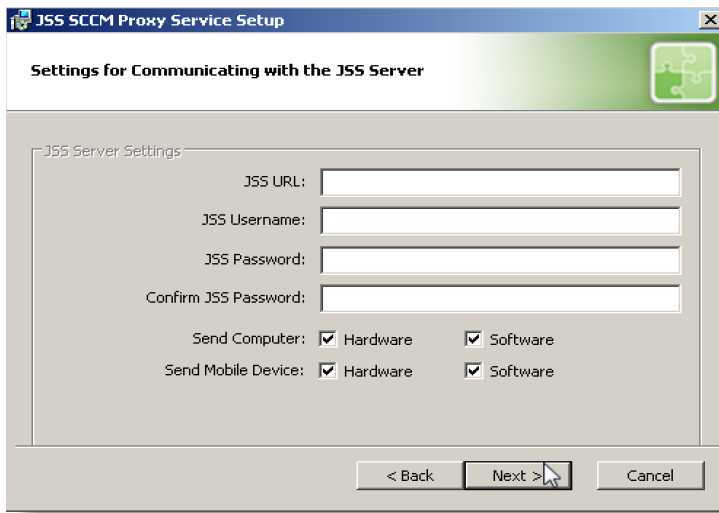
1. On a Windows computer that has Microsoft .NET Framework 4 and belongs to the same domain as the CA, extract the SCCM plug-in ZIP file.
2. Double-click the JSS SCCM Proxy Installer .msi file in the SCCM plug-in directory, and verify that you are running the JSS v9.4 or later. Then, click **Next** to proceed.



3. Configure the SCCM settings on the pane and click **Next**.



4. Configure the settings for communicating to the JSS server, and specify the information to send to SCCM.



5. Choose where you want to install the JSS SCCM proxy service and click **Next**.
6. Click **Install**.
7. When the installation is complete, click **Finish**.

Upgrading the SCCM Plug-in

The instructions in this section explain how to upgrade the SCCM plug-in v3.30 or later to the most current version.

1. On the server where the JSS SCCM Proxy Service is installed, navigate to C:\Program Files (x86)\JAMF Software\JSS SCCM Proxy Service\ and locate the settings.xml file.
2. Save a copy of the settings.xml file to your desktop.
3. Uninstall the JSS SCCM Proxy Service using the Control Panel.
4. Using the latest SCCM plug-in ZIP file, follow the instructions in the "Installing the JSS SCCM Proxy Service" section to re-install the JSS SCCM Proxy Service.
You can use the copy of the settings.xml file to see which settings were applied in the previous version of the JSS SCCM Proxy Service. All relevant settings are near the beginning of the file.
5. Log in to the JSS server.
6. Remove the Client and CA certificates from the JSS server. Those certificates were required to install previous version of the plug-in, but they are no longer needed.

Any remaining files related to the plug-in are removed automatically when the JSS is upgraded.

Troubleshooting the JSS SCCM Proxy Service

This section explains how the log and the helper application can be used to troubleshoot the JSS SCCM Proxy Service

Changing the JSS SCCM Proxy Service Logging Level

The log for the JSS SCCM Proxy Service is located on the computer with the JSS SCCM Proxy Service.

You can customize the amount of information that is included in the log by choosing one of the following logging levels:

- Debug
- Info
- Warn
- Error
- Fatal

By default, the log is configured to use the “Warn” level.

For more information on the logging levels, see the following Apache Logging Services documentation:

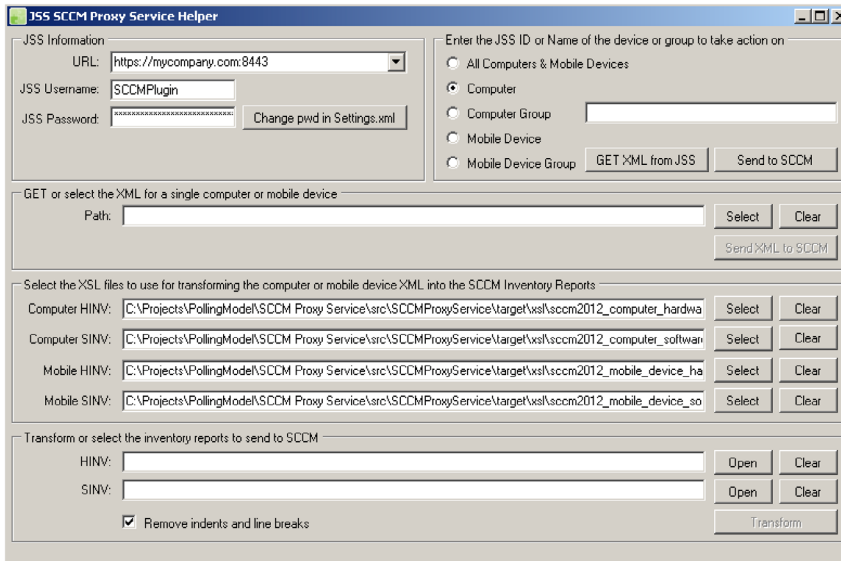
<http://logging.apache.org/log4j/1.2/apidocs/org/apache/log4j/Level.html>

1. On the computer with the JSS SCCM Proxy Service, navigate to C:\Program Files (x86)\JAMF Software\JSS SCCM Proxy Service\ and open the settings.xml file with a text editor.
2. Locate the element that begins with level value and replace the text in quotes with either “DEBUG”, “INFO”, “WARN”, “ERROR”, or “FATAL”.
3. Save and close the file.

JSS SCCM Proxy Service Helper

The JSS SCCM Proxy Service Helper allows you to perform advanced troubleshooting tasks such as testing the connection to the JSS and sending information on one or more computers or mobile devices to SCCM without waiting for a change in inventory.

The following screen shot shows the helper application and its functionality.



The helper must be "Run as administrator." It is stored in the same directory as the proxy service and is located in:

```
C:\Program Files (x86)\JAMF Software\JSS SCCM Proxy Service\JAMF.JSS.  
ProxyService.Plugins.SCCM2012.Helper.exe
```


Release History

Version	Changes
v3.41	<ul style="list-style-type: none"> ▪ Fixed an issue that caused the FQDN for a computer to list the NetBIOS name at the end instead of at the beginning. ▪ Fixed an issue that caused the JSS host server's response type to default to JSON instead of XML. ▪ Fixed an issue that prevented files sent from the JSS to the SCCM Plug-in from being saved if the SCCM Plug-in is in debug mode.
v3.40	<ul style="list-style-type: none"> ▪ Requires the JSS v9.4 or later. ▪ Added support for exporting Android devices to SCCM. ▪ Uses a polling model that no longer requires the JSS Plug-in. ▪ Compatible with hosted instances of the JSS. ▪ Reduced the number of required certificates from five to one or two depending on the configuration of the management point in SCCM.
v3.30	<ul style="list-style-type: none"> ▪ The SCCM Plug-in now sends light-weight messages from the JSS to the SCCM. ▪ REST lookups and XSL transformations are now performed on the proxy service. ▪ Fixed an issue that prevented partition information from being correctly reported in SCCM. ▪ Added the ability to send the Active Directory status and FileVault 2 status in the JSS v9.0 and later. ▪ Added support for the JSS v9.2. ▪ The plug-in now listens for API events in JSS v9.23 and later. ▪ Fixed an issue that caused a false error message to appear when saving plug-in settings. ▪ Added a helper application that troubleshoots and aids proxy service functionality.
v3.21	<ul style="list-style-type: none"> ▪ Added support for the JSS v9.1. ▪ Fixed an issue that caused the SMS_MP_CONTROL_MANAGER component status to be displayed as "Warning".
v3.2	<ul style="list-style-type: none"> ▪ Added support for the JSS v9.0. ▪ Fixed an issue that prevented the SCCM plug-in from sending information for computers in the JSS that do not have a UDID.

Version	Changes
v3.11	<ul style="list-style-type: none"> ▪ Fixed an issue that prevented computer and mobile device names from being updated in SCCM when updated in the JSS. The issue was fixed by ensuring that the SCCM plug-in uses the serial number as the value for the hardware ID. ▪ Fixed an issue that prevented apostrophes (') from being included in names of computers and mobile devices that were added to SCCM using the SCCM plug-in. ▪ The JSS SCCM Proxy Service now sends the Heartbeat Discovery data discovery record (DDR) to SCCM, which allows SCCM to determine if computers and mobile devices are still active.
v3.1	<ul style="list-style-type: none"> ▪ Added an option to the JSS SCCM Proxy Service Installer to specify if the SCCM management point uses HTTPS. ▪ Fixed an issue that prevented the log for the SCCM plug-in from being created on Linux. ▪ Fixed an issue that prevented the SCCM plug-in from being installed on Windows.
v3.0	<ul style="list-style-type: none"> ▪ Re-implemented the plug-in to interact with the JSS Events API, allowing inventory information from the JSS to be updated in SCCM in real time. ▪ Added support for Microsoft's SCCM 2012. ▪ Added support for communication over HTTPS.
v2.0	<ul style="list-style-type: none"> ▪ Added compatibility with the JSS Conduit v2.0. ▪ Decreased memory usage. ▪ Added the ability to export inventory information for secondary MAC addresses, additional disk partitions, and logical disk sizes. ▪ Fixed an issue that caused the SCCM plug-in to export inaccurate data for computers that don't have unique computer names in SCCM.

Known Issues

The following issue is known in the SCCM plug-in v3.41:

The SCCM plug-in can be used with English and French language packs only.