



Altiris Plug-in User Guide

Version 2.12

JAMF Software, LLC
© 2014 JAMF Software, LLC. All rights reserved.

JAMF Software has made all efforts to ensure that this guide is accurate.

JAMF Software
301 4th Ave S Suite 1075
Minneapolis, MN 55415-1039
(612) 605-6625

Under the copyright laws, this publication may not be copied, in whole or in part, without the written consent of JAMF Software, LLC.

Altiris is a trademark of Symantec Corporation.

The Casper Suite, the JAMF Software logo, the JAMF Software Server (JSS), and the Recon Suite are trademarks of JAMF Software, LLC in the United States and other countries.

Oracle and Java are registered trademarks of Oracle and/or its affiliates.

All other product and service names mentioned are the trademarks of their respective companies.

Contents

Page 4	Overview
Page 4	Requirements
Page 4	Installing the Altiris Plug-in
Page 5	Setting up an Altiris Plug-in Instance
Page 6	Enabling Debug Mode
Page 6	Release History
Page 6	Known Issues

Overview

The Altiris plug-in is a plug-in for the JSS Conduit. It allows you to export inventory data from the JSS to an Altiris database. This allows system administrators who are using Altiris to view hardware and software information for the computers and mobile devices in the JSS.

Note: Inventory data acquired using Recon.exe and exported from the JSS to an Altiris database may contain less information than inventory data that is acquired using Altiris on Windows computers.

Requirements

Exporting data using the Altiris plug-in requires:

- The JSS Conduit v2.0
- The JSS v8.21 or later
- A JSS user account with privileges to read computers and mobile devices
For instructions on granting privileges to JSS user accounts, see the *Casper Suite Administrator's Guide*.
- **Note:** If you are using the JSS v8.7 or earlier, these privileges are API privileges.
- The following components installed on the server that hosts the Altiris database:
 - Altiris Client Management Suite v7.1
 - Symantec Administrator SDK (ASDK) v7.1
 - (Optional) Altiris Mobile Management v7.2
 - Java v1.6
- Credentials for a local administrator account on the server that hosts the Altiris database. This user must be a member of the "Symantec Administrators" group in Altiris.

Installing the Altiris Plug-in

Follow these steps to install the Altiris plug-in in the JSS Conduit.

You must have the JSS Conduit installed before you install the plug-in. For instructions on how to install the JSS Conduit, see the JSS Conduit User Guide.

1. On the computer that has the JSS Conduit installed, extract the Altiris plug-in ZIP file.
2. Copy contents of the extracted folder to the following location:
`/path/to/JSSConduit/resources/plugins/`

Setting up an Altiris Plug-in Instance

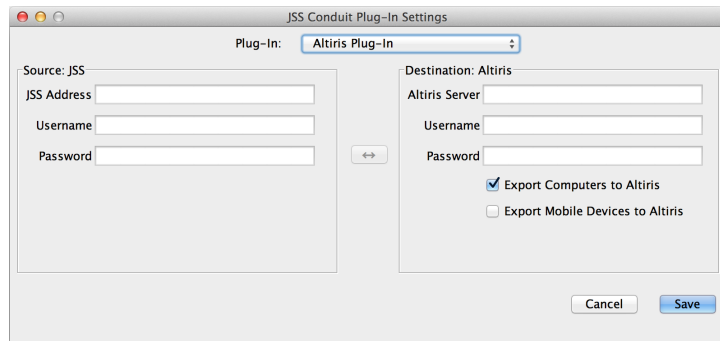
Before you can export data to an Altiris database, you must launch the JSS Conduit and set up an Altiris plug-in instance. This allows you to specify a source and destination for the data you plan to export.

If you have more than one JSS or Altiris database, you can set up multiple instances of the Altiris plug-in.

1. Open the JSS Conduit (`JSSConduit.jar`).
2. If prompted, enter credentials for a local administrator account and click OK.
3. Click **Add (+)** and choose "Altiris Plug-in" from the **Plug-In** pop-up menu.
4. Enter the URL of the JSS you want to export data from.

The URL must include the correct protocol, domain, and port. It cannot end in a forward slash (/). For example:

`https://jss.mycompany.corp:8443`



5. Enter credentials for a JSS user account.
The account must have privileges to read computers and mobile devices.
6. Enter the DNS name or IP address of the server that hosts the Altiris database.
7. Enter credentials for a local administrator account on the server that hosts the Altiris database.
This user must be a member of the "Symantec Administrators" group in Altiris.
8. Choose whether you want to export computers, mobile devices, or both to the Altiris database.
9. Click **Save**.

After setting up an Altiris plug-in instance, it appears in the main window of the JSS Conduit. For instructions on how to start exporting data, see "Exporting Data with the JSS Conduit" in the *JSS Conduit User Guide*.

Enabling Debug Mode

To enable Debug mode, place a blank text file (.txt) named "debug" in the following location:

/path/to/JSS Conduit/resources/plugins/Altiris/

If you are using the JSS Conduit in Debug mode on Linux, the JSS Conduit must be installed in the user home directory.

Note: You may need to create the Altiris directory if it does not exist in the specified location.

Release History

Version	Changes
v2.12	The JSS Conduit now uses Transport Layer Security (TLS) v1.0, and does not use Secure Sockets Layer (SSL) v3.0.
v2.11	<ul style="list-style-type: none">Fixed an issue that caused the secondary MAC address instead of the primary MAC address to appear in the Altiris database. The secondary MAC address is now used only if the primary is unavailable.Fixed an issue that prevented the following fields from being populated in the Altiris database:<ul style="list-style-type: none">Physical (Defaults to "1")Routable (Defaults to "1" if the computer has an IP address in the JSS)IP Routing Enabled (Defaults to "0")WINS Proxy Enabled (Defaults to "0")
v2.1	Added support for the JSS v9.0.
v2.0	<ul style="list-style-type: none">Added support for mobile devices.Added Debug mode.Added support for international characters.

Known Issues

The following is a known issue in the Altiris plug-in v2.12:

If you use the JSS Conduit on Windows, some international characters may not be exported properly.